



# Trevor R. Marsh Memorial Endowment Fund

## *History of Giving*

After Trevor's death, a number of his friends came forward to tell us how he had been helpful in their lives. He cared about their well being and was always available to listen. After many months of contemplating the best way to remember Trevor, we decided to establish a fund in his name with a focus on kids.

We researched a number of local foundations but decided to place our fund with the Madison Community Foundation (MCF). Having experience with MCF due to board work, I found them respectful and responsive to our needs. Most importantly, their fee structure was the lowest of all the funds we researched.

The basis of the fund came from the \$8,000 received in memorials for Trevor. With minimum of \$10,000 required to open a fund, we established the Trevor R. Marsh Memorial Endowment Fund in April of 2007. At a minimum, we intended to make an award every year on his birthday of April 20th. However, the fund has grown steadily and we make grants throughout the year. We are also pleased to say that the fund balance recently crossed the \$155,000 mark.

When considering award recipients, we look for situations where our moderate donation will have maximum impact. Organizations where the donation is needed, noticeable and very positive. When remembering Trevor, we would like to add joy to the lives for the children served by the recipients.

Our goal is to inspire children by giving them an opportunity to try an activity that they may otherwise never try. In doing so, we hope that they gain self confidence and perhaps learn a life skill.

We want Trevor's short life to continue to have a positive impact. The positive impact he would have made in many more lives, given time.

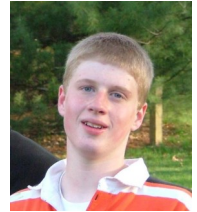


Trevor R. Marsh Memorial Endowment Fund  
*managed through*  
Madison Community Foundation  
[www.madisoncommunityfoundation.org](http://www.madisoncommunityfoundation.org)



[www.southmetrorugby.com](http://www.southmetrorugby.com)

**Trevor R. Marsh Memorial Endowment Fund Support**  
2008 - 2015



Trevor and his father are members of a growing, life long, global fraternity of rugby players. The spirit of competition and the style of sportsmanship that is unique to rugby can change a kid's life.

We appreciate that all are welcome to participate and all will get to play. All players are eligible to run with the ball and score. It's tradition for each team to cry *three cheers* for the Sir (ref) and *three cheers* for the other team. Uniquely, the home team throws an after game party, where players from both teams can mingle.

Three members of the South Metro Tigers visited Rugby, England (where the game originated) in February, to play the local team. They traveled with other players from their league.

Primarily played in the Twin Cities suburbs, the seed money for this club came from The Metropolis Foundation (TMF, [www.themetropolisfoundation.org](http://www.themetropolisfoundation.org)) with a goal to expand rugby for kids in the Twin Cities. Our donations are made through the TMF with direction that the South Metro Tigers Rugby Club receive the entire donation.

The team is taking a hiatus. Many new teams have emerged in the area, taking away potential players.

Hopefully, the South Metro Tigers will return in the future.







# Dowling Urban Environment

MINNEAPOLIS PUBLIC SCHOOLS

<http://dowling.mpls.k12.mn.us>

### Trevor R. Marsh Memorial Endowment Fund Support

- 2009 Snowshoe donation valued at \$4,014.00
- 2010 Snowshoe and other equipment donation valued at \$4,380.00
- 2011 Swimming Pool Equipment valued at \$2,009.00\*
- 2012 Cross Country Ski Equipment valued at \$12,375.00
- 2013 Snowshoe donation valued at \$4,200
- 2014 Snowshoes and snow pants and cash valued at \$4,500
- 2015 Inline skates, helmets and protective gear valued \$11,000
- 2016 Inline Skate, XC and camping equipment valued at \$9,000
- 2017 Go Pro Cameras, winter apparel, sleds and more, valued at \$10,000
- 2018 Key Log Rolling Log with accessories and instruction values at \$7000
- 2019 Gaga Pit-Direct Donation \$2000
- 2020 Cash Donation to General Fund in the year of Covid 19 \$2000
- 2021 Cash Donation to General Fund \$2000
- 2022 Cash Donation to General Fund \$2000



### *Dowling Urban Environmental School description from their website:*

Dowling is located on River Road overlooking the Mississippi river. It features 18 acres of land with a wonderful environmental diversity, including several large playground areas, a host of trees, a secluded nature area, an orchard, and the second oldest community garden in the United States. An active environmental program is also a part of the school's promise for the future.

We recognized an opportunity to make a donation that would have great and immediate impact for the recipients. Unlike most urban schools, Dowling Urban Environmental has land behind it and the Mississippi River gorge before it. Representing Tubbs Snowshoes also gave us the opportunity to buy the snowshoes at a dramatic discount. Giving more for less, we couldn't pass up making another donation in 2009.

In early October, a meeting was requested with Mr. Rossow, Dowling's principal and Trevor's former 6th grade teacher. We told him of our plans to donate enough snowshoes for one class and two instructors and he became very excited. The school had been looking for a way to get the kids outdoors during the winter. With our very cool fall, the timing was perfect. Caught up in the excitement of principal and staff, we ended up donating enough for two classrooms.

As of 2017 at least four classrooms may snowshoe or inline skate at the same time, and at least two classes may go cross country skiing. Dowling now shares their fleet of equipment with other Minneapolis schools, expanding the impact of our support. Plenty of tents, sleeping bags, cameras, snow saucers, adaptive sleds and winter apparel and boots for children that don't have the means to stay warm in a Minnesota winter. Our current support goes to their general fund.



Aerial view of Dowling Grounds.

Plenty of room to snowshoe!



Morning view from the Dowling's front door.

# Additional Grant Recipients



2014-\$1000  
2015-\$1000  
2016-\$1000  
2017-\$2000  
2018-\$2000  
2019-\$2000  
2020-\$2000  
2021-\$2000  
2022-\$2000

[www.bigcitymountaineers.org](http://www.bigcitymountaineers.org)

Big City Mountaineers transforms the lives of under-served urban youth through wilderness mentoring expeditions that instill critical life skills. We partner with community-based youth organizations and caring adult volunteers who act as mentors in the field to help young people realize their potential. Our curriculum improves integrity, self-esteem, responsibility, decision-making abilities and communication skills in close to 1,000 youth annually. BCM has a proven track record of improving young peoples' lives with:

- Increased likeliness to stay in school
- Reduction in violence
- Reduction in drug use



2014-\$500  
2015-\$1000  
2016-\$1000  
2017-\$1500  
2018-\$1500  
2019-\$1000  
2020-\$1000  
2021-\$1500

[www.youthlinkmn.org](http://www.youthlinkmn.org)

Homeless young people ages 16-23 turn to YouthLink as a safe and supportive refuge from life on the street.

YouthLink responds to the basic needs these youth have and offers a responsive community of excellence where they can choose to take positive steps in their lives toward empowerment and self-sufficiency. Youth find here the opportunity to work toward the End of Homelessness and the services and support they need on this journey.

## Haven Acres

2014-\$1000  
2015-\$1000  
2016-\$1000  
2017-\$500  
2018-\$500  
2019-\$500  
2020-\$500  
2021-\$500  
2022-\$500

[www.havenacresmn.org](http://www.havenacresmn.org)

Haven Acres has been established to serve the youth of Burnsville, MN and the surrounding communities. The founders, Jason and Jenifer Heath, took in a teenage boy over 10 years ago that struggled with learning disabilities and mental health issues due to the abuse and neglect he had suffered as a child. The Heaths heard about a youth ranch out West that used horses to help bring healing to kids with these types of issues, and when they searched for one nearby that could possibly assist the hurting teen they were raising, they were unable to find one in the area. The program is being developed by following the model of a youth ranch in Oregon called Crystal Peaks Youth Ranch.

Co-founder Jenifer just happens to be the daughter of Trevor's Kindergarten and 1st grade teacher, Becky Garrett.